

Examination technique and procedure

2.1 Thoracic and abdominal wall

THORACIC WALL

*Longitudinal view
Sternocostal joint*

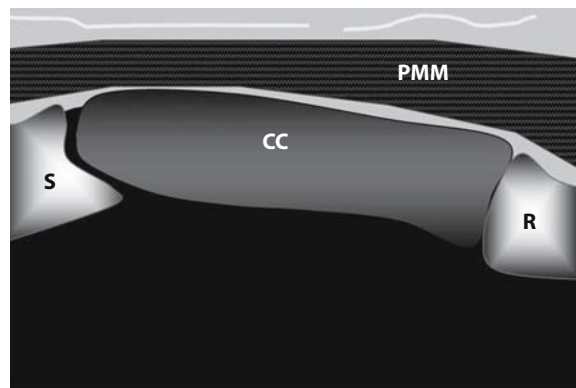
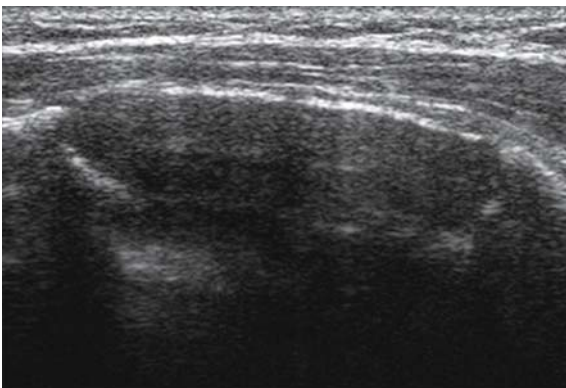
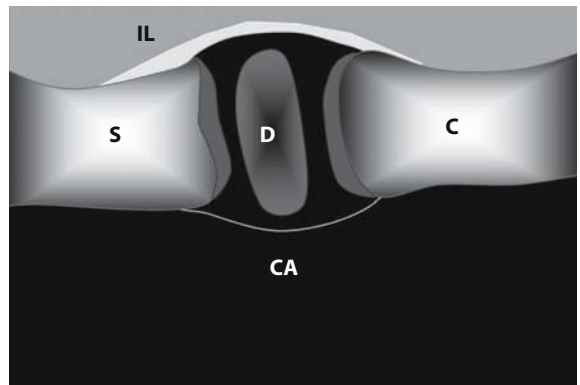
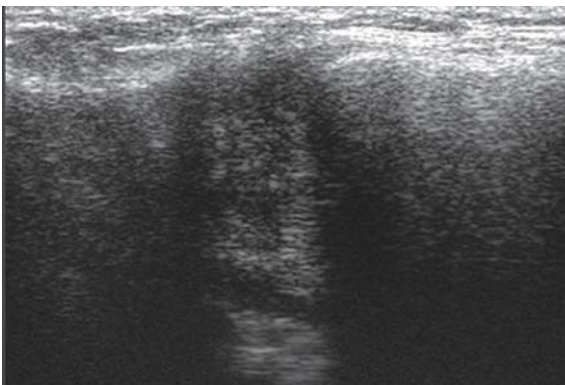


Fig. 2.1

Sternocostal longitudinal view. *R* = rib; *S* = sternum; *CC* = costal cartilage; *PMM* = pectoralis major muscle

THORACIC WALL***Longitudinal view
Sternoclavicular joint*****Fig. 2.2**

Sternoclavicular longitudinal view. C = clavicle; S = sternum; D = articular disk; CA = capsule; IL = interclavicular ligament